

P-1126

Kativik Regional Government



May 2016



How it all began

- 1978
- Pursuant to the *James Bay and Northern Québec Agreement* and the *Act respecting Northern Villages and the Kativik Regional Government* (Kativik Act)
- Half a dozen employees
- Annual budget of \$66,000



What is the KRG

- ❑ A public, non-ethnic organization
- ❑ A municipality outside the boundaries of the 14 northern villages
- ❑ The KRG
 - makes decisions that are regional in scope
 - works to find solutions to problems that are common to all the northern villages
 - provides public services to all residents in various fields (excluding health and education)



KRG workforce

- ❑ 10 departments
- ❑ Some 400 employees – half in Kuujuaq
- ❑ A little over 60% Inuit (KRPF not included)
- ❑ More than 40% women
- ❑ An office, a police station and an airport in each northern village



Where the KRG has jurisdiction

- Over all the territory of the Kativik Region
- The Kativik Region is the territory of Québec north of the 55th parallel except for the category 1A and 1B lands intended for the Cree community of Whapmagoostui



KRG responsibilities and mandates

- Responsibilities established under the Kativik Act
 - local administration; transportation; communications; policing; employment and workforce training
- Mandates delegated by
 - the northern villages
 - the governments of Québec and Canada



KRG responsibilities and mandates

- ❑ Delivery of some government income support services (last-resort financial assistance and parental insurance) and information about others
- ❑ Employment and training
- ❑ Childcare
- ❑ Regional recreation programs
- ❑ Internet service provider



KRG responsibilities and mandates

- ❑ Crime victims support and offender reintegration
- ❑ By-law enforcement management office
- ❑ Delivery of policing services by the KRPF
- ❑ Fire protection assistance and community emergency preparedness
- ❑ Search and rescue planning
- ❑ Marine infrastructure maintenance



KRG responsibilities and mandates

- ❑ Inuit Hunting, Fishing and Trapping Support Program
- ❑ Park development and operations
- ❑ Wildlife conservation, environmental protection and regional land use
- ❑ Regional development
- ❑ Local and business development
- ❑ Airport management

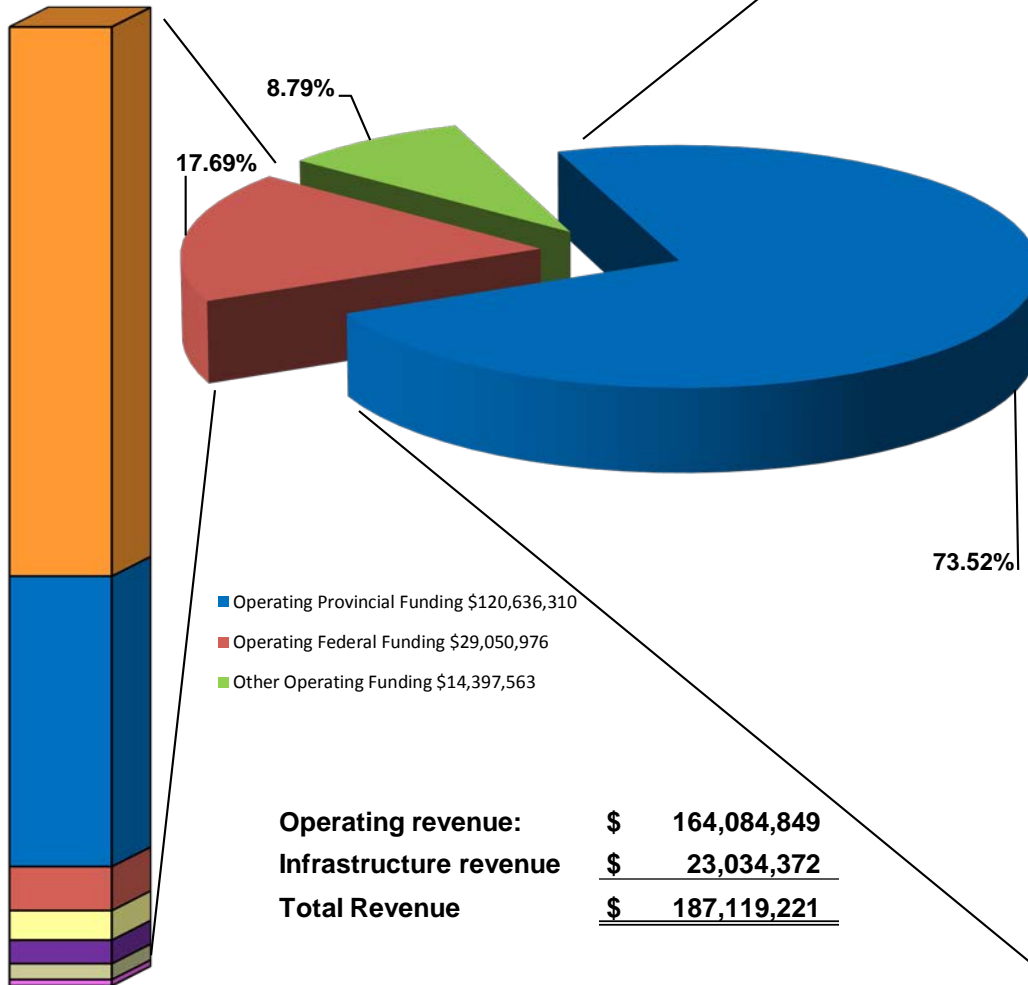


KRG responsibilities and mandates

- More and more assistance and training delivered to the northern villages
 - legal affairs, municipal management and finance
 - the environment and land use planning
 - engineering, and infrastructure development and maintenance
 - sports and recreational organization
 - public- and para-transit

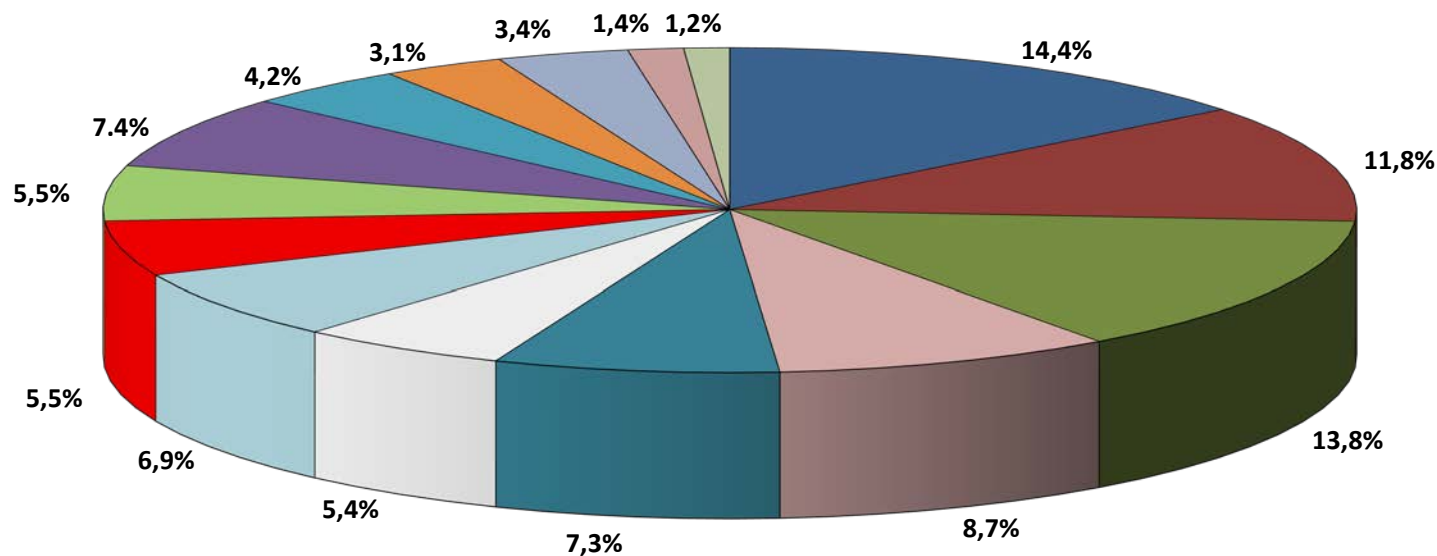
Sources of revenue 2015

- Employment and Social Development Canada (ESDC) (10.14%) \$16,637,978
- Public Safety Canada (5.37%) \$8,809,199
- Aboriginal Affairs and Northern Affairs Canada (0.81%) \$1,331,568
- Health Canada (0.54%) \$892,329
- Transport Canada (0.43%) \$712,001
- Department of Fisheries and Oceans Canada (DFO) (0.29%) \$480,000
- Other Federal Contributions (0.11%) \$187,901



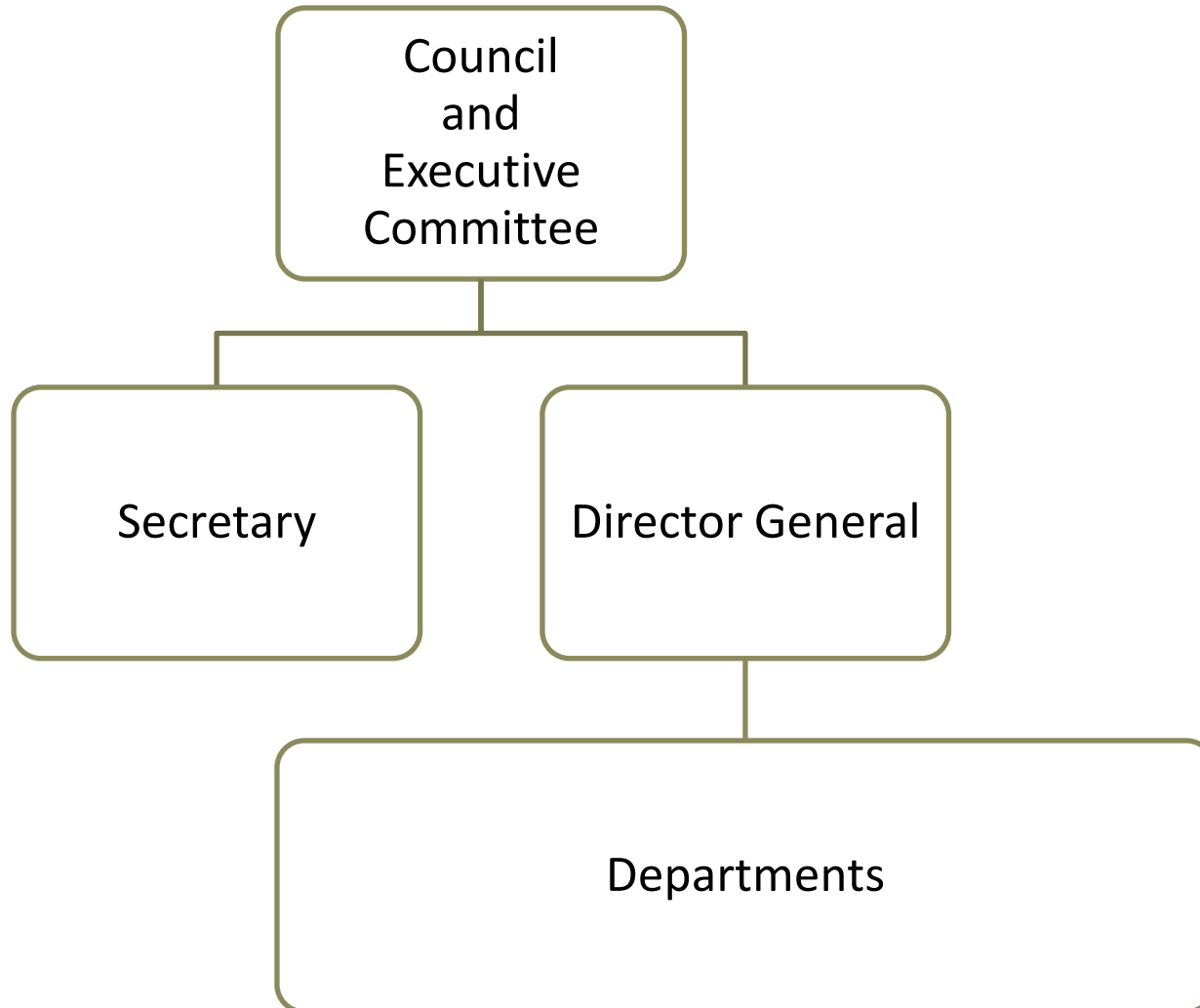
- Secrétariat aux affaires autochtones (53.06%) \$87,067,566
- Ministère de la Sécurité publique (7.08%) \$11,616,510
- Ministère de l'Énergie et des Ressources naturelles (4.68%) \$7,680,962
- Ministère Affaires municipales et de l'Occupation du territoire (2.58%) \$4,229,513
- Ministère des Transports (1.28%) \$2,105,286
- Sanarrutiik Amendement #3 - Ungaluk (0.84%) \$1,376,361
- Emploi-Québec (1.96%) \$3,216,072
- Ministère de la justice (0.52%) \$848,178
- Tourisme Québec (0.21%) \$346,667
- Other provincial contributions (0.15%) \$248,663
- Ministère de l'Éducation et de l'Enseignement supérieur (0.23%) \$371,065
- Ministère de la Santé et des Services Sociaux (0.14%) \$236,284
- Société d'Habitation du Québec (0.10%) \$160,453
- Ministère du Développement durable, de l'Environnement, et de la Lutte contre les changements climatiques (0.69%) \$1,137,730

Expenditure by department 2015



- Child Care Programs (14.4%)
- Sustainable Employment (13.8%)
- Municipal Affairs (7.4%)
- General Administration (6.9%)
- Inuit Support Program for Hunting, Fishing and Trapping Activities (5.5%)
- Sanarrutik Agreement (4.2%)
- Regional and Local Development (3.4%)
- Other Programs (1.2%)
- Public Security (11.8%)
- Transportation (8.7%)
- Renewable Resources (5.4%)
- Building and Housing Operation (5.5%)
- Nunavik Cost of Living Reduction (7.3%)
- Tamaani Internet Services (3.1%)
- Recreation (1.4%)

Structure of the KRG





About the Council

- Exercises the powers of the KRG
- May delegate specific powers by ordinance to
 - the Executive Committee
 - employees of the KRG



About the Council

- 17 members
 - Chairperson and Vice-Chairperson
 - one elected municipal representative appointed by each northern village
 - the chief of the Naskapi village of Kawawachikamach
- Elected for a three-year term



About the Council

- Meetings
 - presided over by the Speaker
 - a majority of Councillors constitutes quorum
 - conducted in Inuktitut and English
- Regular meetings
 - held every three months and lasting four days
 - public and broadcast on regional radio



About the Council

- Special meetings
 - called by the Chairperson, the Executive Committee or at least four members of the Council, in writing



About the Council

□ Adopts

- resolutions for every day administrative matters, normally coming into effect on the day of their adoption
- by-laws when the KRG acts as a municipality, requiring the approval of the Minister of Municipal Affairs and Land Occupancy
- ordinances for internal management matters, setting minimum standards, etc.



About the Council

- Voting
 - decisions made by a majority vote
 - one vote per member and an additional vote if the member represents more than 500 people
 - votes are cast orally
 - obligation to vote (exceptions: personal involvement or direct pecuniary interest)
 - when voting is tied, the matter is considered not approved



About the Council

- The Council appoints representatives to
 - Kativik School Board
 - Nunavik Regional Board of Health and Social Services
 - Kativik Regional Development Council
 - Kativik Municipal Housing Bureau
 - Nunavik Mineral Exploration Fund
 - Nunavik Tourism Association
 - and others



About the Council

- Nunivaat – Nunavik Statistics Program
 - important management tool
 - a permanent databank on the socioeconomic situation in Nunavik
 - www.nunivaat.org



About the Executive Committee

- Five members appointed by the Council
 - Chairperson and Vice-Chairperson (must devote all their time to the KRG)
 - three members
- Three members constitute a quorum
- Meets bi-weekly



About the Executive Committee

- ❑ Responsible for the management of the affairs of the KRG
- ❑ Provides input on the KRG budget as developed by the department directors, treasurer and director general, and sets some orientations
- ❑ Sets the salaries and other conditions of employment of KRG employees



About the Director General

- ❑ Manages the affairs of the KRG under the supervision of the Executive Committee
- ❑ Exercises authority over the department directors
- ❑ Ensures that programs are delivered, projects carried out and objectives achieved
- ❑ Acts as the communication link between the Executive Committee and KRG employees



About the Secretary

- ❑ Acts as custodian of all books, records, registers and archives of the KRG
- ❑ Attends every meeting of the Executive Committee and of the Council
- ❑ Drafts minutes
- ❑ Signs contracts and agreements with the governments of Québec and Canada



Responsibilities of the KRG departments

ABOUT THE DEPARTMENTS



Administration

- ❑ Provides administrative services to the KRG departments, the Council and the Executive Committee
- ❑ Procurement section coordinates purchasing, travel arrangements and sealift transportation
- ❑ Assets management section manages all KRG buildings and vehicles throughout Nunavik



Administration

- Information technology section provides support to KRG users, operates all KRG electronic systems
- Tamaani delivers Internet services to the residential and organization customers
- Communications section is responsible for internal and external KRG communications, translation and reception

Finance, Treasury and Human Resources

- Treasury
 - collects all moneys payable to the KRG
 - ensures these moneys are employed for the purposes for which they were received
 - prepares annual audited financial statements
 - prepares and submits to the Council annual KRG budget
 - plans and directs all activities related to cash management, including long-term debt and investment portfolio

Finance, Treasury and Human Resources

□ Finance

- controls all KRG accounting transactions according to the Kativik Act
- administers regional cost-of-living measures and the funding for some projects under section 2.5 of the Sanarrutik Agreement

Finance, Treasury and Human Resources

- Human resources
 - administers all matters related to human resources, including collective agreements and labour relations
 - manages the delivery of training to staff
 - manages a range of benefits and health and safety programs for employees and group insurance for councillors
 - delivers payroll services

Legal, Socio-Judicial and Municipal Management

- ❑ Provides legal advice to the KRG departments, the Council and the Executive Committee
- ❑ Oversees contracts and calls for tenders
- ❑ Delivers legal, financial and technical assistance to the northern villages
- ❑ Assists in the negotiation of government agreements

Legal, Socio-Judicial and Municipal Management

- Administers and coordinates the insurance portfolios of the KRG and northern villages
- Manages
 - Sapummijiit, crime victims assistance centre
 - Inuit Community Reintegration Officers Program
 - Offence Management Bureau



Municipal Public Works

- ❑ Helps the northern villages to obtain and operate essential community infrastructure (ex. planning, construction and maintenance)
- ❑ Delivers related technical assistance to the northern villages (ex. water quality, recreational building and vehicle maintenance, engineering)
- ❑ Directs KRG construction projects and asset maintenance and repairs



Municipal Public Works

- Manages
 - Isurruutiit Program for roads, garages, heavy-equipment, wastewater lagoons, water plants, landfills, etc.
 - Pivaliutiit Program for community infrastructure development
 - Gasoline tax program for maintaining and improving lagoons, water plants and roads
 - Québec-government projects, on occasion



Public Security

- Kativik Regional Police Force
 - maintains peace, order and public security
 - prevents and represses crime and offences under the law and apprehends offenders
 - coordinates search and rescue operations
- Civil Security Section
 - provides assistance related to civil security, fire prevention and emergency measures



Recreation

- Assists the Northern villages and local groups in organizing local recreational, cultural and sports activities
- Placing an emphasis on youth, administers and coordinates, in partnership with regional organizations, regional recreational, cultural and sports activities including the Arctic Winter Games and Cirqiniq and kite-ski programs

Renewable Resources, Environment, Lands and Parks

- ❑ Manages the Inuit Hunting, Fishing and Trapping Support Program and the Uumajuit Program (fisheries and wildlife conservation)
- ❑ Provides land use planning assistance to the northern villages
- ❑ Administers regional land use planning (land use requests, development monitoring, protected areas, etc.)

Renewable Resources, Environment, Lands and Parks

- Develops and manages Québec national parks in Nunavik (parc national des Pingualuit, parc national Kuururjuaq, parc national Tursujuq, and park projects Ulittaniujalik and Baie-aux-Feuilles (Tasiujaq))
- Implements projects and acts a liaison on environmental issues (residual materials and wastewater management, climate change, abandoned mining sites, etc.)



Regional and Local Development

- ❑ Assists the KRG to act as the body responsible for regional development and as the primary interlocutor with Québec for related matters
- ❑ Coordinates the Territories Development Fund
- ❑ Delivers government economic development programs, including the Makigiarutiit Fund
- ❑ Coordinates and delivers services in local development



Regional and Local Development

- ❑ Assists entrepreneurs to access funding and provides technical management assistance
- ❑ Provides development assistance to various regional organizations
- ❑ Acts as a facilitator between businesses and different levels of government



Sustainable Employment

- Employment and income support
 - delivers some government services and provides information on others (last-resort financial assistance, parental insurance, employment insurance, old age pensions)
 - operates offices in each northern village and in Verdun for urban Inuit
- Childcare
 - oversees childcare centres (19 facilities and 1009 places) and transfers government funding



Sustainable Employment

- Workforce and youth:
 - delivers training and employment funds with focus on the tourism, mining and construction sectors
 - operates Ivirtivik centres in Inukjuak and Montreal, and Youth Employment Services (YES) Nunavik
 - Administers the Economic and Community Development Fund under section 2.5 of the Sanarrutik Agreement



Transportation

- ❑ Manages, operates and maintains airports in the 14 northern villages (13 airports owned by Québec and one by Canada)
- ❑ Participates in transportation needs assessment and implementation planning related to local and regional transportation



Transportation

- Provides technical assistance to the northern villages for Usijiit para-transit and public-transit services
- Maintains the marine infrastructure in the northern villages



The KRG is party to more than 60 agreements (closed envelopes) with the governments of Québec and Canada and a block funding agreement with the Québec government comprising more than 21 mandates

ABOUT AGREEMENTS

Agreement negotiation

- Each agreement involves weeks, months or even years of negotiation
- Agreements:
 - are with different levels of government and many different government departments
 - have different obligations and different reporting requirements
 - are for different periods and with different funding
- Agreements with Canada require approval by Québec (6 to 12 months additional delay)

KRG Agreements

- Sivunirmut - KRG block funding
 - Inuit community reintegration officers
 - Northern airports - operations and maintenance
 - Northern airports – lighting/marketing systems
 - Wildlife protection assistants
 - Operations of parc national des Pingualuit
 - Operations of parc national Kuururjuaq
 - Operations of parc national Tursujuq
 - Parks development



KRG Agreements

- Sivunirmut - KRG block funding
 - Income security
 - Manpower training and employment services adapted to the region
 - Childcare centre programs and operations
 - Environmental follow-up in the northern villages
 - Logistical support for guard services

KRG Agreements

- Sivunirmut - KRG block funding
 - General administration of the KRG, municipal mandates, land use planning and assistance to the Northern villages
 - Civil security and fire prevention
 - Regional recreational and sports units
 - Regional and local development
 - Usijiit para-transit and public-transit services



KRG Agreements

- Sivunirmut - KRG block funding
 - Youth Employment Service (YES) Nunavik for youth from 16 to 35 years of age
 - Services to the population with regards to the Québec Parental Insurance Plan



KRG Agreements

- ❑ Block funding for the northern villages
- ❑ Sanarrutik, *Partnership Agreement on Economic and Community Development in Nunavik*
- ❑ Measures to reduce the cost of living
- ❑ Funding and delivery of policing
- ❑ Construction of police stations



KRG Agreements

- ❑ Firefighters training
- ❑ Infrastructure and equipment for the fire safety cover plan
- ❑ Telecommunication services for the MSSS and CSPQ clients in Nunavik
- ❑ Villages branchés program
- ❑ Broadband Internet services



KRG Agreements

- ❑ Delivery of training programs and childcare services
- ❑ Aboriginal Head Start program
- ❑ Training of Inuit in mining and tourism sectors
- ❑ Tourism development
- ❑ Services for urban Inuit



KRG Agreements

- ❑ Management of the Kuujuaq airport
- ❑ Maintenance of marine infrastructures
- ❑ Isurruutiit Program for municipal infrastructure improvements
- ❑ Paving of public roads
- ❑ Economic and community development, including the Makigiarutiit Fund and Pivaliutiit Program



KRG Agreements

- Kativik Municipal Housing Bureau
(administration of social housing in the 14 northern villages)
- Implementation of the JBNQA related to housing
- Aboriginal Aquatic Resource and Oceans Management Program
- Proposed protected areas



KRG Agreements

- ❑ Clean-up of abandoned mineral exploration sites
- ❑ Development of mineral resources
- ❑ Infrastructure for Parc national des Pingualuit
- ❑ Infrastructure for Parc national Kuururjuaq
- ❑ Infrastructure for Parc national Tursujuq
- ❑ Regional plan for integrated land and natural resource management



KRG Agreements

- Comprehensive funding agreement on the delivery of economic development and other services
- Specific agreement on equality between men and women
- Specific agreement on adapting regional services and infrastructure to improve the living conditions of seniors



KRG Agreements

- ❑ Specific agreement to improve conditions for the activities of artists and writers
- ❑ Specific agreement concerning agro-food development
- ❑ Specific agreement concerning consolidation and development of the social economy
- ❑ Regional round table on seniors



KRG Agreements

- ❑ Strategy to combat poverty
- ❑ Age-Friendly Municipality support program
- ❑ Nunavik Cooperative Development Fund
- ❑ Sapumijiit, crime victims assistance centre
- ❑ Regional round table on off-highway vehicles



For more information on
the Kativik Regional Government

www.krg.ca